



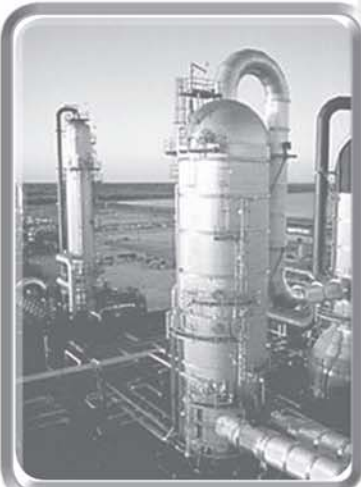
Spacemaster[®] EX Hazardous Location Electric Wire Rope Hoists

McLaughlin Hoist & Crane
Authorized Sales & Service

(636) 343-9700

www.stlcrane.com

www.rmhoist.com



**1-1/2 — 20 Ton
1600 — 20000 kg**





Spacemaster® EX

Hazardous Location Electric Wire Rope Hoists

4501 Gateway Blvd.
Springfield, OH 45502
Tel: (937) 328-5100
Fax: (937) 325-5319
www.rmhoist.com

Bulletin No.: EX-09

Spacemaster® is a registered trademark of R&M Materials Handling, Inc.

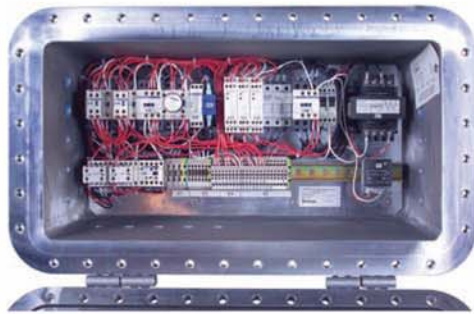
© 2009, R&M
Materials Handling, Inc.

The Spacemaster® EX is the hazardous location version of the industry leading Spacemaster® SX hoist. An innovative design that includes a large drum diameter gives the Spacemaster® EX hoists the lowest headrooms and best wheel loads in the industry, while providing near true vertical lift with single reeving, as well as exceptional hook approaches and heights of lift.



Standard Configurations:

- Monorail trolley and double girder trolley
- 1-1/2 — 20 ton capacities with ASME H3, or ASME H4 duty rating
- 1,600kg — 20,000kg capacities with FEM 1Am, 2m, or 3m rating
- Lifts start at 13 ft to 324 ft [4m to 99m] and longer
- 460V-3Ph-60Hz, 575V-3Ph-60Hz, or 380V-3Ph-50Hz power supply
- Hoist fast speed 10 — 62 fpm [3 — 19 m/min.]
- For Class I, Groups C & D, Division 2 applications
- Temperature classification is T3
- Single reeved or double reeved



Standard Features:

- Two speed hoist with 6:1 ratio, contactor control
- Hoist motor is class F insulated, 60% effective duty and thermally protected
- Hoist disc brake
- Two speed trolley with 4:1 ratio, contactor control
- Electro-mechanical load limit switch
- 2-position hoist limit switch
- NEMA 4, 7 rated control panel
- CSA C/US approved
- Approx. 40:1 drum to rope diameter ratio for extended rope life
- Rope guide with spring loaded pressure roller
- Trolley motor with disc brake
- Trolley bumpers
- Mainline contactor
- 115 volt control
- Push-button pendant assembly suitable for Class 1, Division 2
- Available options include bronze coated load hook and bronze trolley wheels



R&M Materials Handling, Inc. is a proud member of the following organizations:



R&M Materials Handling, Inc. may alter or amend the technical specifications identified herein at any time with or without notice.

YOUR DISTRIBUTOR CONTACT IS:



McLaughlin Hoist & Crane
1850 Larkin Williams Rd.
Fenton, MO 63026
(636)343-9700
Fax(636)343-0840